

Quality Products

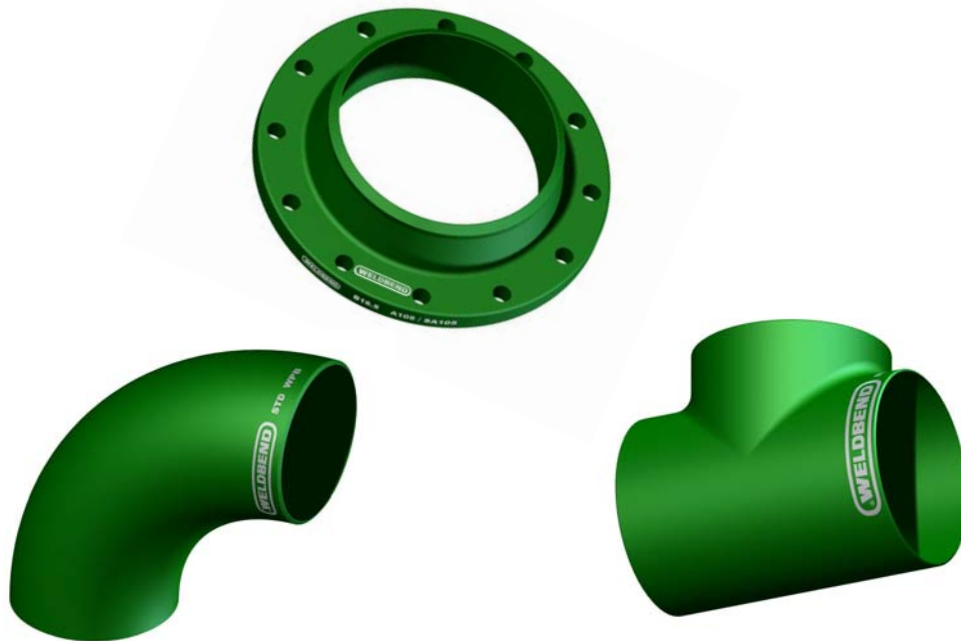
From



“The Industry Standard for Welding Fittings and Flanges”

1/2" THRU 60"

(CARBON STEEL ONLY)



LIST PRICE SCHEDULE No. 109

Weldbend Corporation
6600 South Harlem Ave.
Argo, Illinois 60501-1930

Effective January 5, 2010

Phone: 708/594-1700
773/582-3500
Fax: 708/458-0106
773/582-7621

www.weldbend.com
e-mail: info@weldbend.com



ISO 9001:2000 Approved

* Denotes price change

STANDARD - WELDING FITTINGS

| Size | Elbows | | | | | 180° Return Bends | | Tees | | Caps | Stub Ends |
|------------------------|----------------------|----------------------|-----------|----------------------|-----------|-------------------|--------------|----------------------|----------------------|----------------------|----------------|
| | Long Radius | Short Radius | 3R-90° | 45° | 3R-45° | Long Radius | Short Radius | Straight | Reducing | | |
| Catalog Page Reference | 22 | 23 | | 25 | | 26 | 27 | 28 | 30-31 | 36 | 37 |
| 1/2" | \$ 16.56 | \$ | \$ | \$ 17.60 | \$ | \$ 154.60 | \$ | \$ 54.52 | \$ | \$ 20.36 | \$ 235.71 |
| 3/4" | 16.56 | | | 17.60 | | 154.60 | | 54.52 | 63.15 | 20.36 | 235.71 |
| 1" | 16.56 | 26.57 | | 17.60 | | 154.60 | | 54.52 | 63.15 | 20.36 | 235.71 |
| 1 1/4" | 16.56 | 26.57 | | 17.60 | | 154.60 | 222.58 | 54.52 | 63.15 | 20.36 | 235.71 |
| 1 1/2" | 16.56 | 26.57 | | 17.60 | | 154.60 | 222.58 | 54.52 | 63.15 | 20.36 | 235.71 |
| 2" | 23.15 | 35.22 | 267.74 | 22.60 | 352.44 | 154.60 | 222.58 | 55.77 | 93.27 | 22.52 | 235.70 |
| 2 1/2" | 28.05 | 56.42 | 395.91 | 27.07 | 380.25 | 154.60 | 222.58 | 76.96 | 102.40 | 23.68 | 242.60 |
| 3" | 34.24 | 66.20 | 342.75 | 28.05 | 314.38 | 177.03 | 222.58 | 85.77 | 99.79 | 23.68 | 242.60 |
| 3 1/2" | 56.42 | 86.75 | | 50.55 | | | 256.75 | 120.34 | 126.53 | 34.55 | 345.09 |
| 4" | 56.42 | 86.75 | 490.15 | 50.55 | 416.78 | 245.36 | 256.75 | 120.34 | 126.53 | 34.55 | 345.09 |
| 5" | 121.64 | 257.96 | | 76.64 | | 739.88 | 736.43 | 198.61 | 273.29 | 53.19 | 345.09 |
| 6" | 124.42 | 229.26 | 874.00 | 99.47 | 653.54 | 570.44 | 661.54 | 206.76 | 258.65 | 59.01 | 657.05 |
| 8" | 234.95 | 379.60 | 1,701.03 | 165.67 | 1,191.31 | 1,313.42 | 1,523.24 | 360.69 | 469.28 | 89.29 | 817.52 |
| 10" | 467.65 | 777.14 | 3,125.51 | 330.68 | 2,472.95 | 1,976.05 | 1,566.01 | 708.65 | 865.84 | 161.89 | ON APPLICATION |
| 12" | 692.67 | 1,085.97 | 4,307.36 | 467.65 | 3,019.85 | | 1,633.99 | 991.72 | 1,278.06 | 244.20 | |
| 14" | 999.40 | 1,507.64 | 5,748.80 | 628.75 | 4,160.94 | ON APPLICATION | | 1,739.84 | 1,927.68 | 324.95 | |
| 16" | 1,362.85 | 1,824.95 | 7,131.87 | 1,126.74 | 4,965.14 | | | 1,944.97 | 2,036.60 | 378.91 | |
| 18" | 1,803.76 | 2,827.11 | 10,726.01 | 1,593.41 | 8,165.99 | | | 3,354.22 | 3,899.01 | 518.67 | |
| 20" | 2,495.13 | 2,950.06 | 10,993.75 | 1,649.50 | 8,358.72 | | | 4,850.35 | 4,986.01 | 588.55 | |
| 24" | 3,528.59 | 4,539.88 | 15,325.25 | 2,499.69 | 10,876.35 | | | 6,260.15 | 6,917.28 | 800.14 | |
| 30" | | | | | | | | | | | |
| 36" | | | | | | | | | | | |
| 42" | STOCK | STOCK | | STOCK | | | | STOCK | STOCK | STOCK | |
| 48" | | | | | | | | | | | |
| 54" | PRICE ON APPLICATION | PRICE ON APPLICATION | | PRICE ON APPLICATION | | | | PRICE ON APPLICATION | PRICE ON APPLICATION | PRICE ON APPLICATION | |
| 60" | | | | | | | | | | | |

EXTRA STRONG - WELDING FITTINGS

| Size | Elbows | | | | | 180° Return Bends | | Tees | | Caps | Stub Ends |
|------------------------|----------------------|----------------------|-----------|----------------------|-----------|-------------------|--------------|----------------------|----------------------|----------------------|----------------|
| | Long Radius | Short Radius | 3R-90° | 45° | 3R-45° | Long Radius | Short Radius | Straight | Reducing | | |
| Catalog Page Reference | 22 | 23 | | 25 | | 26 | 27 | 29 | 32-33 | 36 | 37 |
| 1/2" | \$ 21.74 | \$ | \$ | \$ 23.12 | \$ | \$ 195.67 | \$ | \$ 53.83 | \$ | \$ 25.19 | \$ 267.45 |
| 3/4" | 21.74 | | | 23.12 | | | | 53.83 | 81.79 | 25.19 | 267.45 |
| 1" | 21.74 | 52.45 | | 23.12 | | 195.67 | | 53.83 | 81.79 | 25.19 | 267.45 |
| 1 1/4" | 21.74 | 52.45 | | 23.12 | | 195.67 | 243.29 | 53.83 | 81.79 | 25.19 | 267.45 |
| 1 1/2" | 21.74 | 52.45 | | 23.12 | | 195.67 | 243.29 | 53.83 | 81.79 | 25.19 | 267.45 |
| 2" | 27.76 | 87.35 | 256.98 | 29.05 | 359.71 | 220.13 | 273.70 | 61.34 | 87.74 | 22.52 | 267.45 |
| 2 1/2" | 39.06 | 87.35 | 457.87 | 64.56 | 380.25 | 220.13 | 273.70 | 102.10 | 95.26 | 31.06 | 257.09 |
| 3" | 50.04 | 87.35 | 376.01 | 37.45 | 318.29 | 319.90 | 363.38 | 95.12 | 110.65 | 34.55 | 295.05 |
| 3 1/2" | 82.32 | 143.64 | | 59.08 | | 395.99 | 619.22 | 153.74 | 164.61 | 46.98 | 389.61 |
| 4" | 82.32 | 143.64 | 653.54 | 59.08 | 557.01 | 395.99 | 619.22 | 153.74 | 164.61 | 46.98 | 389.61 |
| 5" | 196.60 | 322.62 | | 140.43 | | 930.58 | 1,094.42 | 335.04 | 485.22 | 76.87 | 389.62 |
| 6" | 208.22 | 334.65 | 1,140.76 | 161.73 | 825.08 | 1,094.42 | 1,140.61 | 294.40 | 304.76 | 95.50 | 1,285.12 |
| 8" | 395.78 | 715.89 | 2,191.51 | 279.57 | 1,460.35 | 2,153.11 | 2,669.46 | 582.66 | 606.41 | 143.26 | |
| 10" | 834.82 | 1,079.27 | 4,751.21 | 538.47 | 3,176.71 | | 2,847.06 | 868.47 | 1,049.77 | 220.13 | ON APPLICATION |
| 12" | 1,023.03 | 1,289.69 | 4,967.32 | 798.67 | 4,239.53 | | 2,941.18 | 1,263.68 | 1,684.91 | 294.28 | |
| 14" | 1,418.16 | 1,856.90 | 5,228.76 | 1,008.50 | 4,431.37 | ON APPLICATION | | 2,399.25 | 2,582.49 | 446.46 | |
| 16" | 1,788.12 | 2,248.23 | 8,708.47 | 1,225.12 | 6,666.64 | | | 2,276.96 | 3,300.89 | 512.07 | |
| 18" | 2,341.44 | 2,934.62 | 12,926.80 | 1,842.68 | 9,019.58 | | | 4,811.70 | 4,749.97 | 692.60 | |
| 20" | 3,337.67 | 3,581.02 | 12,679.08 | 2,193.26 | 8,825.49 | | | 5,259.44 | 5,514.00 | 732.97 | |
| 24" | 5,431.18 | 5,481.78 | 16,286.14 | 3,680.19 | 12,746.41 | | | 7,080.83 | 6,898.43 | 1,043.95 | |
| 30" | | | | | | | | | | | |
| 36" | | | | | | | | | | | |
| 42" | STOCK | STOCK | | STOCK | | | | STOCK | STOCK | STOCK | |
| 48" | | | | | | | | | | | |
| 54" | PRICE ON APPLICATION | PRICE ON APPLICATION | | PRICE ON APPLICATION | | | | PRICE ON APPLICATION | PRICE ON APPLICATION | PRICE ON APPLICATION | |
| 60" | | | | | | | | | | | |

NOTE: PRICE SHEET 109

ALL PRICES ARE
BASED ON ORDERS
OF APPROXIMATELY
EQUAL AMOUNTS OF
FITTINGS AND FLANGES
PAGE 2



* Denotes price change



PHONE: 708/594-1700

773/582-3500

FAX: 708/458-0106

773/582-7621

www.WELDBEND.com

e-mail: info@weldbend.com

WELDING REDUCERS

| Size | STANDARD | | EXTRA STRONG | | XXS & SCH-160 | | Size | STANDARD | | EXTRA STRONG | |
|------------------------|------------|-----------|--------------|-----------|---------------|-----------|------------------------|------------|-----------|----------------------|----------------------|
| | Concentric | Eccentric | Concentric | Eccentric | Concentric | Eccentric | | Concentric | Eccentric | Concentric | Eccentric |
| Catalog Page Reference | 34 | 34 | 35 | 35 | | | Catalog Page Reference | 34 | 34 | 35 | 35 |
| 3/4 x 1/2" | \$ 54.75 | \$ 74.15 | \$ 39.97 | \$ 68.45 | \$ | \$ | 8 x 5" | \$144.63 | \$ 254.22 | \$ 229.07 | \$ 332.37 |
| 1 x 1/2" | 54.75 | 74.15 | 39.97 | 68.45 | | | 8 x 6" | 128.46 | 195.83 | 187.75 | 291.05 |
| 1 x 3/4" | 54.75 | 74.15 | 39.97 | 68.45 | | | 10 x 4" | 426.25 | 707.87 | 610.85 | 975.11 |
| 1 1/4 x 1/2" | 54.75 | 74.15 | 39.97 | 68.45 | | | 10 x 5" | 341.36 | 541.68 | 446.46 | 768.05 |
| 1 1/4 x 3/4" | 54.75 | 74.15 | 39.97 | 68.45 | | | 10 x 6" | 234.01 | 451.40 | 321.14 | 689.90 |
| 1 1/4 x 1" | 54.75 | 74.15 | 39.97 | 68.45 | | | 10 x 8" | 249.28 | 256.47 | 269.04 | 471.61 |
| 1 1/2 x 1/2" | 54.75 | 74.15 | 39.97 | 68.45 | | | 12 x 4" | 861.03 | 2,269.19 | 1,386.98 | 1,893.12 |
| 1 1/2 x 3/4" | 54.75 | 74.15 | 39.97 | 68.45 | | | 12 x 5" | 1,030.61 | 1,763.44 | 1,490.19 | 1,780.85 |
| 1 1/2 x 1" | 54.75 | 74.15 | 39.97 | 68.45 | | | 12 x 6" | 371.00 | 1,012.84 | 480.14 | 1,019.13 |
| 1 1/2 x 1 1/4" | 54.75 | 74.15 | 39.97 | 68.45 | | | 12 x 8" | 354.38 | 627.92 | 446.46 | 876.30 |
| 2 x 1/2" | 253.21 | 352.98 | 253.21 | 519.18 | | | 12 x 10" | 308.12 | 400.20 | 439.27 | 674.63 |
| 2 x 3/4" | 75.01 | 207.06 | 107.35 | 386.27 | | | 14 x 6" | 1,357.89 | 2,017.99 | 2,538.64 | 2,898.03 |
| 2 x 1" | 48.51 | 72.76 | 48.96 | 93.87 | | | 14 x 8" | 783.32 | 1,210.92 | 1,302.54 | 2,050.83 |
| 2 x 1 1/4" | 35.03 | 72.76 | 47.16 | 108.25 | | | 14 x 10" | 634.65 | 822.40 | 704.27 | 1,638.96 |
| 2 x 1 1/2" | 35.03 | 44.92 | 39.08 | 49.41 | | | 14 x 12" | 463.53 | 702.48 | 704.27 | 1,539.70 |
| 2 1/2 x 3/4" | 451.66 | 630.33 | 416.02 | 631.09 | | | 16 x 6" | 2,353.67 | 3,883.50 | 4,303.47 | 9,543.42 |
| 2 1/2 x 1" | 90.73 | 259.16 | 116.33 | 265.00 | | | 16 x 8" | 1,179.92 | 3,113.08 | 1,889.59 | 7,139.74 |
| 2 1/2 x 1 1/4" | 76.36 | 110.49 | 81.75 | 118.13 | | | 16 x 10" | 896.51 | 1,564.85 | 1,438.19 | 2,096.20 |
| 2 1/2 x 1 1/2" | 57.04 | 61.08 | 53.45 | 74.11 | | | 16 x 12" | 811.17 | 1,427.41 | 1,001.61 | 1,916.98 |
| 2 1/2 x 2" | 44.02 | 52.10 | 53.45 | 74.11 | | | 16 x 14" | 811.17 | 1,074.37 | 987.69 | 1,500.17 |
| 3 x 1" | 89.38 | 291.95 | 111.39 | 339.11 | | | 18 x 8" | 4,310.43 | 4,706.88 | 7,033.17 | 6,554.61 |
| 3 x 1 1/4" | 70.97 | 250.63 | 88.48 | 280.27 | | | 18 x 10" | 1,445.82 | 2,394.43 | 2,453.72 | 3,975.00 |
| 3 x 1 1/2" | 44.92 | 69.62 | 59.74 | 101.96 | | | 18 x 12" | 1,196.54 | 2,120.90 | 1,888.24 | 2,579.93 |
| 3 x 2" | 39.08 | 61.08 | 44.92 | 61.08 | | | 18 x 14" | 1,104.92 | 2,000.08 | 1,675.34 | 1,477.07 |
| 3 x 2 1/2" | 36.38 | 57.04 | 44.92 | 61.08 | | | 18 x 16" | 886.18 | 1,935.40 | 1,381.59 | 2,407.01 |
| 3 1/2 x 1 1/4" | 218.97 | 390.99 | 334.08 | 390.80 | | | 20 x 10" | 2,596.10 | 8,551.46 | 2,688.63 | 11,404.12 |
| 3 1/2 x 1 1/2" | 201.70 | 365.60 | 295.70 | 365.60 | | | 20 x 12" | 1,952.92 | 6,710.79 | 2,409.26 | 8,430.60 |
| 3 1/2 x 2" | 97.47 | 109.59 | 118.13 | 147.77 | | | 20 x 14" | 1,583.26 | 5,483.71 | 2,091.71 | 6,238.29 |
| 3 1/2 x 2 1/2" | 93.87 | 102.41 | 156.75 | 141.03 | | | 20 x 16" | 1,520.83 | 2,424.53 | 1,790.77 | 3,463.87 |
| 3 1/2 x 3" | 93.87 | 97.47 | 156.75 | 122.62 | | | 20 x 18" | 1,520.83 | 2,430.82 | 1,838.38 | 2,593.41 |
| 4 x 1" | 151.28 | 624.02 | 182.78 | 807.53 | | | 24 x 10" | 6,562.57 | 12,259.92 | 7,079.77 | 15,961.88 |
| 4 x 1 1/4" | 151.28 | 624.02 | 182.78 | 807.53 | | | 24 x 12" | 3,952.55 | 10,891.94 | 6,059.52 | 11,974.65 |
| 4 x 1 1/2" | 102.86 | 304.97 | 110.49 | 490.48 | | | 24 x 14" | 3,603.55 | 8,487.64 | 6,039.76 | 10,690.94 |
| 4 x 2" | 57.04 | 90.73 | 75.46 | 131.15 | | | 24 x 16" | 1,835.69 | 5,281.14 | 5,082.61 | 8,030.41 |
| 4 x 2 1/2" | 57.04 | 78.60 | 67.82 | 99.26 | | | 24 x 18" | 1,759.33 | 3,503.84 | 5,082.61 | 6,645.67 |
| 4 x 3" | 46.71 | 74.56 | 57.49 | 95.67 | | | 24 x 20" | 1,720.26 | 3,187.19 | 4,622.68 | 5,634.17 |
| 4 x 3 1/2" | 48.96 | 74.56 | 59.74 | 95.67 | | | 30 x 16" | | | STOCK | STOCK |
| 5 x 2" | 180.11 | 557.40 | 442.42 | 1,040.69 | | | 30 x 18" | | | STOCK | STOCK |
| 5 x 2 1/2" | 180.11 | 235.36 | 212.90 | 306.77 | | | 30 x 20" | | | PRICE ON APPLICATION | PRICE ON APPLICATION |
| 5 x 3" | 118.13 | 150.47 | 178.31 | 276.23 | | | 30 x 24" | | | PRICE ON APPLICATION | PRICE ON APPLICATION |
| 5 x 3 1/2" | 107.16 | 163.88 | 126.06 | 220.60 | | | 36 x 18" | | | STOCK | STOCK |
| 5 x 4" | 86.69 | 150.47 | 122.62 | 221.43 | | | 36 x 20" | | | STOCK | STOCK |
| 6 x 2" | 295.54 | 531.80 | 367.86 | 687.20 | | | 36 x 24" | | | PRICE ON APPLICATION | PRICE ON APPLICATION |
| 6 x 2 1/2" | 235.81 | 414.57 | 432.53 | 495.86 | | | 36 x 30" | | | PRICE ON APPLICATION | PRICE ON APPLICATION |
| 6 x 3" | 118.58 | 240.75 | 161.25 | 269.04 | | | 42 x 24" | | | STOCK | STOCK |
| 6 x 3 1/2" | 163.49 | 327.76 | 215.14 | 441.24 | | | 42 x 30" | | | PRICE ON APPLICATION | PRICE ON APPLICATION |
| 6 x 4" | 97.92 | 153.61 | 137.89 | 207.06 | | | 42 x 36" | | | PRICE ON APPLICATION | PRICE ON APPLICATION |
| 6 x 5" | 87.58 | 110.49 | 133.85 | 254.67 | | | 48 x 24" | | | | |
| 8 x 3" | 360.22 | 609.50 | 592.43 | 767.15 | | | 48 x 30" | | | | |
| 8 x 3 1/2" | 466.44 | 850.93 | 743.79 | 1,008.53 | | | 48 x 36" | | | STOCK | STOCK |
| 8 x 4" | 165.29 | 357.97 | 229.07 | 406.03 | | | 48 x 42" | | | PRICE ON APPLICATION | PRICE ON APPLICATION |

NOTE: PRICE SHEET 109
 ALL PRICES ARE
 BASED ON ORDERS
 OF APPROXIMATELY
 EQUAL AMOUNTS OF
 FITTINGS AND FLANGES
 PAGE 3



PHONE: 708/594-1700
 773/582-3500
 FAX: 708/458-0106
 773/582-7621
 www.WELDBEND.com
 e-mail: info@weldbend.com

TRUE SCHEDULE - 80 - WELDING FITTINGS

| Size | Elbows | | | Tees | | Caps |
|------|----------------------|----------------------|----------------------|----------------------|----------------------|------|
| | Long Radius | Short Radius | 45° | Straight | Reducing | |
| | PRICE ON APPLICATION | PRICE ON APPLICATION | PRICE ON APPLICATION | PRICE ON APPLICATION | PRICE ON APPLICATION | |
| | \$ | \$ | \$ | \$ | \$ | \$ |
| 10" | STOCK | STOCK | STOCK | STOCK | STOCK | |
| 12" | STOCK | STOCK | STOCK | STOCK | STOCK | |
| 14" | STOCK | STOCK | STOCK | STOCK | STOCK | |
| 16" | STOCK | STOCK | STOCK | STOCK | STOCK | |
| 18" | STOCK | STOCK | STOCK | STOCK | STOCK | |
| 20" | STOCK | STOCK | STOCK | STOCK | STOCK | |
| 24" | STOCK | STOCK | STOCK | STOCK | STOCK | |

DOUBLE EXTRA STRONG & SCHEDULE 160 WELDING FITTINGS

| Size | Tees-Straight | | Tees-Reducing | | Long Radius | | Elbows | | 45° | | Caps | |
|--------|---------------|----------|----------------------|----------------------|----------------------|----------------------|----------------------|----------------------|----------------------|----------------------|----------------------|----------------------|
| | XXS | SCH-160 | XXS | SCH-160 | XXS | SCH-160 | Short Radius | | XXS | SCH-160 | XXS | SCH-160 |
| | | | | | | | XXS | SCH-160 | | | | |
| 1/2" | \$ 131.67 | \$ | \$ | \$ | \$ | \$ | \$ | \$ | \$ | \$ | \$ | \$ |
| 3/4" | 131.67 | | | | | | | | | | | |
| 1" | 131.67 | 131.67 | PRICE ON APPLICATION | PRICE ON APPLICATION | PRICE ON APPLICATION | PRICE ON APPLICATION | PRICE ON APPLICATION | PRICE ON APPLICATION | PRICE ON APPLICATION | PRICE ON APPLICATION | PRICE ON APPLICATION | PRICE ON APPLICATION |
| 1 1/4" | 131.67 | 131.67 | | | | | | | | | | |
| 1 1/2" | 131.67 | 131.67 | | | | | | | | | | |
| 2" | 304.76 | 274.09 | | | 218.96 | 173.15 | | | 192.56 | 163.44 | | |
| 2 1/2" | 716.28 | 473.25 | | | 249.63 | 214.30 | | | 224.78 | 192.56 | | |
| 3" | 856.43 | 584.28 | PRICE ON APPLICATION | PRICE ON APPLICATION | 356.01 | 204.21 | PRICE ON APPLICATION | PRICE ON APPLICATION | 329.99 | 179.36 | PRICE ON APPLICATION | PRICE ON APPLICATION |
| 4" | 1,450.03 | 752.00 | | | 466.65 | 335.82 | | | 416.57 | 279.52 | | |
| 5" | | | | | 1,418.59 | 949.61 | | | 822.66 | 748.12 | | |
| 6" | 3,483.57 | 3,350.80 | | | 1,368.50 | 861.87 | | | 954.27 | 608.74 | | |
| 8" | | | | | | | | | | | | |

Y52 STANDARD - WELDING FITTINGS

| Size | Elbows | | | Tees | | Reducers | |
|--------|----------------------|----------------------|----------------------|----------------------|----------------------|----------------------|-----------|
| | Long Radius | Short Radius | 45° | Straight | Reducing | Concentric | Eccentric |
| | PRICE ON APPLICATION | PRICE ON APPLICATION | PRICE ON APPLICATION | PRICE ON APPLICATION | PRICE ON APPLICATION | PRICE ON APPLICATION | |
| 2" | \$ STOCK | \$ STOCK | \$ STOCK | \$ STOCK | \$ STOCK | \$ STOCK | |
| 2 1/2" | STOCK | STOCK | STOCK | STOCK | STOCK | STOCK | |
| 3" | STOCK | STOCK | STOCK | STOCK | STOCK | STOCK | |
| 4" | STOCK | STOCK | STOCK | STOCK | STOCK | STOCK | |
| 5" | STOCK | STOCK | STOCK | STOCK | STOCK | STOCK | |
| 6" | STOCK | STOCK | STOCK | STOCK | STOCK | STOCK | |
| 8" | STOCK | STOCK | STOCK | STOCK | STOCK | STOCK | |
| 10" | STOCK | STOCK | STOCK | STOCK | STOCK | STOCK | |
| 12" | STOCK | STOCK | STOCK | STOCK | STOCK | STOCK | |
| 14" | STOCK | STOCK | STOCK | STOCK | STOCK | STOCK | |
| 16" | STOCK | STOCK | STOCK | STOCK | STOCK | STOCK | |
| 18" | STOCK | STOCK | STOCK | STOCK | STOCK | STOCK | |
| 20" | STOCK | STOCK | STOCK | STOCK | STOCK | STOCK | |
| 24" | STOCK | STOCK | STOCK | STOCK | STOCK | STOCK | |

NOTE: PRICE SHEET 109

ALL PRICES ARE
BASED ON ORDERS
OF APPROXIMATELY
EQUAL AMOUNTS OF
FITTINGS AND FLANGES
PAGE 4



PHONE: 708/594-1700

773/582-3500

FAX: 708/458-0106

773/582-7621

www.WELDBEND.com

e-mail: info@weldbend.com

Y52 EXTRA STRONG - WELDING FITTINGS

| Size | Elbows | | | Tees | | Reducers | |
|------|----------------------|----------------------|----------------------|----------------------|----------------------|----------------------|----------------------|
| | Long Radius | Short Radius | 45° | Straight | Reducing | Concentric | Eccentric |
| | PRICE ON APPLICATION | PRICE ON APPLICATION | PRICE ON APPLICATION | PRICE ON APPLICATION | PRICE ON APPLICATION | PRICE ON APPLICATION | PRICE ON APPLICATION |
| 2" | \$ STOCK | \$ STOCK | \$ STOCK | \$ STOCK | \$ STOCK | \$ STOCK | |
| 2½" | STOCK | STOCK | STOCK | STOCK | STOCK | STOCK | |
| 3" | STOCK | STOCK | STOCK | STOCK | STOCK | STOCK | |
| 4" | STOCK | STOCK | STOCK | STOCK | STOCK | STOCK | |
| 5" | STOCK | STOCK | STOCK | STOCK | STOCK | STOCK | |
| 6" | STOCK | STOCK | STOCK | STOCK | STOCK | STOCK | |
| 8" | STOCK | STOCK | STOCK | STOCK | STOCK | STOCK | |
| 10" | STOCK | STOCK | STOCK | STOCK | STOCK | STOCK | |
| 12" | STOCK | STOCK | STOCK | STOCK | STOCK | STOCK | |
| 14" | STOCK | STOCK | STOCK | STOCK | STOCK | | |
| 16" | STOCK | STOCK | STOCK | STOCK | STOCK | | |
| 18" | STOCK | STOCK | STOCK | STOCK | STOCK | | |
| 20" | STOCK | STOCK | STOCK | STOCK | STOCK | | |
| 24" | STOCK | STOCK | STOCK | STOCK | STOCK | | |



CLASS 150 FLANGES - RAISED OR FLAT FACE

| Size | Slip-On | | Welding-Neck | | Blind | Threaded | | Socket-Weld | | Lap Joint |
|------------------------|----------------------|--------|----------------------|---------------|----------------------|----------------|--------|----------------|---------------|-----------|
| | Reducing | | STD & XS | XXS & SCH-160 | | Reducing | | STD & XS | XXS & SCH-160 | |
| Catalog Page Reference | 41 | | 41 | | 41 | 41/46 | | | | 41 |
| ½" | \$ 20.59 | \$ | \$ 30.11 | \$ 45.84 | \$ 24.71 | \$ 31.02 | \$ | \$ 27.18 | \$ 36.78 | \$ 21.69 |
| ¾" | 20.59 | | 30.11 | 45.84 | 24.71 | 31.02 | | 27.18 | 36.78 | 21.69 |
| 1" | 20.59 | 66.71 | 30.11 | 45.84 | 24.71 | 31.02 | 86.75 | 27.18 | 36.78 | 21.69 |
| 1¼" | 20.59 | 66.71 | 30.11 | 45.84 | 24.71 | 31.02 | 86.75 | 27.18 | 36.78 | 21.69 |
| 1½" | 20.59 | 66.71 | 30.11 | 45.84 | 24.71 | 31.02 | 86.75 | 27.18 | 36.78 | 21.69 |
| 2" | 22.88 | 74.65 | 34.48 | 49.02 | 27.58 | 34.75 | 97.07 | 29.93 | 41.16 | 24.18 |
| 2½" | 39.16 | 104.14 | 37.49 | 52.26 | 41.96 | 42.59 | 113.97 | 40.21 | 59.90 | 38.93 |
| 3" | 31.08 | 78.95 | 40.92 | 63.90 | 35.16 | 42.85 | 103.22 | 38.14 | 54.37 | 32.92 |
| 3½" | 38.95 | | 49.67 | | 49.28 | 49.80 | | | | 40.39 |
| 4" | 38.95 | 84.47 | 49.67 | 121.95 | 49.28 | 49.80 | 109.36 | 49.65 | | 40.39 |
| 5" | 67.84 | 206.12 | 78.43 | 217.73 | 64.81 | 78.38 | 249.44 | need | | 63.40 |
| 6" | 64.05 | 229.18 | 75.03 | 242.07 | 75.03 | 86.14 | 249.44 | 81.18 | | 67.84 |
| 8" | 97.25 | 288.44 | 132.55 | | 123.11 | 147.84 | 436.52 | 116.99 | | 107.56 |
| 10" | 167.84 | 438.41 | 212.29 | | 237.10 | 268.71 | 627.90 | | | 169.93 |
| 12" | 248.89 | 681.33 | 308.50 | | 357.10 | 375.03 | 869.49 | 222.60 | | 311.61 |
| 14" | 330.69 | | 444.71 | | 591.37 | | | | | 664.29 |
| 16" | 516.99 | | 668.63 | | 872.81 | | | | | 867.15 |
| 18" | 642.35 | | 941.05 | | 1,183.27 | ON APPLICATION | | ON APPLICATION | | 987.82 |
| 20" | 734.41 | | 1,147.06 | | 1,487.35 | | | | | 1,113.55 |
| 24" | 1,061.31 | | 1,542.48 | | 2,052.94 | | | | | 1,333.44 |
| *30" 0 | | | | | | | | | | |
| *36" 0 | *STOCK | | *STOCK | | *STOCK | | | | | |
| *42" 0 | | | | | | | | | | |
| *48" 0 | PRICE ON APPLICATION | | PRICE ON APPLICATION | | PRICE ON APPLICATION | | | | | |
| *54" 0 | | | Series "A" "B" | | Series "A" "B" | | | | | |
| *60" 0 | | | | | | | | | | |

* Class 125 °Series A and B

NOTE: PRICE SHEET 109

ALL PRICES ARE
BASED ON ORDERS
OF APPROXIMATELY
EQUAL AMOUNTS OF
FITTINGS AND FLANGES
PAGE 5



PHONE: 708/594-1700

773/582-3500

FAX: 708/458-0106

773/582-7621

www.WELDBEND.com

e-mail: info@weldbend.com

CLASS 300 FLANGES - RAISED OR FLAT FACE

| Size | Slip-On | | Welding-Neck | | Blind | Threaded | | Socket-Weld | | Lap Joint |
|------------------------|----------|--------|----------------------|---------------|----------------------|----------------|--------|----------------|---------------|----------------|
| | Reducing | | STD & XS | XXS & SCH-160 | | Reducing | | STD & XS | XXS & SCH-160 | |
| Catalog Page Reference | 43 | | 43 | | 43 | 43/46 | | | | 43 |
| 1/2" | \$ 27.45 | \$ | \$ 36.24 | \$ 51.88 | \$ 32.12 | \$ 34.31 | \$ | \$ 34.31 | \$ 44.20 | \$ 29.92 |
| 3/4" | 27.45 | | 36.24 | 51.88 | 32.12 | 34.31 | | 34.31 | 44.20 | 29.92 |
| 1" | 27.45 | 119.14 | 36.24 | 51.88 | 32.12 | 34.31 | 133.41 | 34.31 | 44.20 | 29.92 |
| 1 1/4" | 27.45 | 119.14 | 36.24 | 51.88 | 32.12 | 34.31 | 133.41 | 34.31 | 44.20 | 29.92 |
| 1 1/2" | 27.45 | 119.14 | 36.24 | 51.88 | 32.12 | 34.31 | 133.41 | 34.31 | 44.20 | 29.92 |
| 2" | 36.47 | 119.14 | 45.10 | 54.08 | 35.95 | 39.87 | 133.41 | 39.08 | 50.51 | 34.38 |
| 2 1/2" | 41.18 | | 51.63 | 54.09 | 63.14 | 55.82 | | 47.22 | 43.82 | 49.54 |
| 3" | 44.84 | 164.98 | 52.16 | 69.45 | 51.22 | 59.48 | 197.37 | 62.09 | 64.89 | 51.63 |
| 3 1/2" | 64.58 | | 85.75 | | 81.57 | 85.62 | | | | 78.41 |
| 4" | 64.58 | | 85.75 | 112.55 | 81.57 | 85.62 | | 101.26 | 101.55 | 78.41 |
| 5" | 112.05 | | 130.59 | 158.35 | 141.44 | 129.10 | | 129.10 | 134.54 | 130.59 |
| 6" | 112.39 | | 133.33 | 231.41 | 143.01 | 160.26 | | | 164.29 | 140.52 |
| 8" | 191.87 | | 229.80 | | 221.41 | 296.30 | | | | 235.27 |
| 10" | 327.32 | | 415.95 | | 441.28 | 308.83 | | ON APPLICATION | | 363.69 |
| 12" | 402.54 | | 534.88 | | 637.52 | 373.61 | | | | 513.25 |
| 14" | 1,002.98 | | 1,150.20 | | 1,309.57 | | | | | |
| 16" | 1,102.88 | | 1,361.80 | | 1,750.56 | | | | | |
| 18" | 1,372.21 | | 1,734.85 | | 2,274.90 | | | | | |
| 20" | 1,520.55 | | 2,167.32 | | 2,616.34 | ON APPLICATION | | | | ON APPLICATION |
| 24" | 2,403.66 | | 2,992.42 | | 3,918.80 | | | | | |
| 30" | | | °STOCK | | °STOCK | | | | | |
| 36" | | | | | | | | | | |
| 42" | | | PRICE ON APPLICATION | | PRICE ON APPLICATION | | | | | |
| 48" | | | Series "A" "B" | | Series "A" "B" | | | | | |
| 54" | | | | | | | | | | |
| 60" | | | | | | | | | | |

°Series A and B

CLASS 600 FLANGES - RAISED OR FLAT FACE

| Size | Slip-On | | Welding-Neck | | Blind | Threaded | | Socket-Weld | | Lap Joint |
|------------------------|----------------------|-------|----------------------|---------------|----------------------|----------------|-------|----------------------|---------------|----------------|
| | Reducing | | STD & XS | XXS & SCH-160 | | Reducing | | STD & XS | XXS & SCH-160 | |
| Catalog Page Reference | 45 | | 45 | | 45 | 45/46 | | | | 45 |
| 1/2" | \$ 40.63 | \$ | \$ 43.92 | \$ 66.50 | \$ 39.53 | \$ 78.24 | \$ | \$ 62.86 | \$ 74.32 | \$ 66.50 |
| 3/4" | 40.63 | | 43.92 | 66.50 | 39.53 | 78.24 | | 62.86 | 74.32 | 66.50 |
| 1" | 40.63 | 73.51 | 43.92 | 66.50 | 39.53 | 78.24 | 80.70 | 62.86 | 74.32 | 66.50 |
| 1 1/4" | 40.63 | 73.51 | 43.92 | 66.50 | 39.53 | 78.24 | 80.70 | 62.86 | 74.32 | 66.50 |
| 1 1/2" | 40.63 | 73.51 | 43.92 | 66.50 | 39.53 | 78.24 | 80.70 | 62.86 | 74.32 | 66.50 |
| 2" | 49.02 | | 50.59 | 77.78 | 49.80 | 86.25 | | 68.24 | 85.33 | |
| 2 1/2" | 68.47 | | 69.41 | 77.78 | 67.32 | 86.25 | | 76.31 | 87.71 | |
| 3" | 73.33 | | 72.94 | 117.62 | 70.56 | 129.80 | | 92.33 | 87.71 | ON APPLICATION |
| 3 1/2" | 146.80 | | 130.20 | | 123.90 | 190.27 | | | | |
| 4" | 146.80 | | 130.20 | | 123.90 | 190.27 | | 151.27 | | |
| 5" | 164.70 | | 120.24 | | 233.67 | 231.35 | | | | |
| 6" | 334.51 | | 257.12 | | 306.90 | 248.58 | | | 240.50 | |
| 8" | 532.68 | | 494.77 | | 477.36 | 425.83 | | ON APPLICATION | | |
| 10" | 1,176.44 | | 692.81 | | 784.18 | 533.25 | | | | |
| 12" | 1,827.76 | | 1,458.69 | | 1,437.86 | 680.39 | | | | |
| 14" | | | | | | | | | | |
| 16" | | | | | | | | | | |
| 18" | STOCK | | STOCK | | STOCK | ON APPLICATION | | STOCK | | ON APPLICATION |
| 20" | | | | | | | | | | |
| 24" | PRICE ON APPLICATION | | PRICE ON APPLICATION | | PRICE ON APPLICATION | | | PRICE ON APPLICATION | | |
| 30" | | | °STOCK | | °STOCK | | | | | |
| 36" | | | | | | | | | | |
| 42" | | | PRICE ON APPLICATION | | PRICE ON APPLICATION | | | | | |
| 48" | | | Series "A" "B" | | Series "A" "B" | | | | | |
| 54" | | | | | | | | | | |
| 60" | | | | | | | | | | |

°Series A and B

NOTE: PRICE SHEET 109

ALL PRICES ARE
BASED ON ORDERS
OF APPROXIMATELY
EQUAL AMOUNTS OF
FITTINGS AND FLANGES
PAGE 6



* Denotes price change



PHONE: 708/594-1700

773/582-3500

FAX: 708/458-0106

773/582-7621

www.WELDBEND.com

e-mail: info@weldbend.com

CLASS 600 FLANGES - OCTAGONAL RING TYPE- JOINT

| Size | Slip-On | Welding-Neck | | | Blind | Threaded | Socket-Weld | | Lap Joint |
|------------------------|---------|--------------|--------|---------------|-------|----------|-------------|---------------|-----------|
| | | STD & XS | SCH-80 | XXS & SCH-160 | | | STD & XS | XXS & SCH-160 | |
| Catalog Page Reference | | | | | | | | | |
| 2" | | STOCK | STOCK | STOCK | STOCK | | | | |
| 2 1/2" | | STOCK | STOCK | STOCK | STOCK | | | | |
| 3" | | STOCK | STOCK | STOCK | STOCK | | | | |
| 4" | | STOCK | STOCK | STOCK | STOCK | | | | |
| 5" | | STOCK | STOCK | STOCK | STOCK | | | | |
| 6" | | STOCK | STOCK | STOCK | STOCK | | | | |
| 8" | | STOCK | STOCK | STOCK | STOCK | | | | |
| 10" | | STOCK | STOCK | STOCK | STOCK | | | | |
| 12" | | STOCK | STOCK | STOCK | STOCK | | | | |
| 14" | | | | | | | | | |
| 16" | | | | | | | | | |
| 18" | | | | | | | | | |
| 20" | | | | | | | | | |
| 24" | | | | | | | | | |



CLASS 900 FLANGES - RAISED OR FLAT FACE

| Size | Slip-On | Welding-Neck | | | Blind | | Threaded | Socket-Weld | | Lap Joint |
|------------------------|-----------|--------------|---------------|-----------------|-----------|-----------------|-----------|-------------|---------------|----------------------|
| | | STD & XS | XXS & SCH-160 | Ring Type Joint | STD | Ring Type Joint | | STD & XS | XXS & SCH-160 | |
| Catalog Page Reference | | | | | | | | | | |
| *1/2" | \$ 149.27 | \$ 88.23 | \$ 118.25 | \$ STOCK | \$ 141.74 | \$ STOCK | \$ 148.89 | \$ 146.14 | \$ 206.51 | PRICE ON APPLICATION |
| *3/4" | 149.27 | 88.23 | 118.25 | STOCK | 141.74 | STOCK | 148.89 | 146.14 | 206.51 | |
| *1" | 149.27 | 88.23 | 118.25 | STOCK | 141.74 | STOCK | 148.89 | 146.14 | 206.51 | |
| *1 1/4" | 149.27 | 88.23 | 118.25 | STOCK | 141.74 | STOCK | 148.89 | 146.14 | 206.51 | |
| *1 1/2" | 149.27 | 88.23 | 118.25 | STOCK | 141.74 | STOCK | 148.89 | 146.14 | 206.51 | |
| *2" | 149.27 | 95.16 | 95.16 | STOCK | 141.74 | STOCK | 148.89 | 146.14 | 206.51 | |
| *2 1/2" | | 275.49 | 275.49 | STOCK | STOCK | STOCK | | | | |
| 3" | | STOCK | STOCK | STOCK | STOCK | STOCK | | | | |
| 3 1/2" | | | | | | | | | | |
| 4" | | STOCK | STOCK | STOCK | STOCK | STOCK | | | | |
| 5" | | | | | | | | | | |
| 6" | | STOCK | STOCK | STOCK | STOCK | STOCK | | | | |
| 8" | | STOCK | STOCK | STOCK | STOCK | STOCK | | | | |
| 10" | | STOCK | STOCK | STOCK | STOCK | STOCK | | | | |
| 12" | | STOCK | STOCK | STOCK | STOCK | STOCK | | | | |
| 14" | | STOCK | STOCK | STOCK | STOCK | STOCK | | | | |
| 16" | | STOCK | STOCK | STOCK | STOCK | STOCK | | | | |
| 18" | | STOCK | STOCK | STOCK | STOCK | STOCK | | | | |
| 20" | | STOCK | STOCK | STOCK | STOCK | STOCK | | | | |
| 24" | | STOCK | STOCK | STOCK | STOCK | STOCK | | | | |

*Dimensions for these sizes same as class 1500

NOTE: PRICE SHEET 109

ALL PRICES ARE
BASED ON ORDERS
OF APPROXIMATELY
EQUAL AMOUNTS OF
FITTINGS AND FLANGES
PAGE 7



PHONE: 708/594-1700

773/582-3500

FAX: 708/458-0106

773/582-7621

www.WELDBEND.com

e-mail: info@weldbend.com

CLASS 1500 FLANGES - RAISED OR FLAT FACE

| Size | Slip-On | Welding-Neck | | | Blind | | Threaded | Socket-Weld | | Lap Joint |
|------------------------|-----------|--------------|---------------|-----------------|-----------|-----------------|-----------|-------------|---------------|----------------------|
| | | STD & XS | XXS & SCH-160 | Ring Type Joint | STD | Ring Type Joint | | STD & XS | XXS & SCH-160 | |
| Catalog Page Reference | | | | | | | | | | |
| 1/2" | \$ 149.27 | \$ 88.23 | \$ 118.25 | \$ STOCK | \$ 141.74 | \$ | \$ 148.89 | \$ 146.14 | \$ 206.51 | PRICE ON APPLICATION |
| 3/4" | 149.27 | 88.23 | 118.25 | STOCK | 141.74 | | 148.89 | 146.14 | 206.51 | |
| 1" | 149.27 | 88.23 | 118.25 | STOCK | 141.74 | | 148.89 | 146.14 | 206.51 | |
| 1 1/4" | 149.27 | 88.23 | 118.25 | STOCK | 141.74 | | 148.89 | 146.14 | 206.51 | |
| 1 1/2" | 149.27 | 88.23 | 118.25 | STOCK | 141.74 | | 148.89 | 146.14 | 206.51 | |
| 2" | 149.27 | 95.16 | 95.16 | STOCK | 141.74 | STOCK | 148.89 | 146.14 | 206.51 | |
| 2 1/2" | | 275.49 | 275.49 | STOCK | STOCK | STOCK | | | | |
| 3" | | STOCK | STOCK | STOCK | STOCK | STOCK | | | | |
| 3 1/2" | | | | | | | | | | |
| 4" | | STOCK | STOCK | STOCK | STOCK | STOCK | | | | |
| 5" | | | | | | | | | | |
| 6" | | STOCK | STOCK | STOCK | | | | | | |
| 8" | | STOCK | STOCK | STOCK | | | | | | |
| 10" | | STOCK | STOCK | STOCK | STOCK | STOCK | | | | |
| 12" | | STOCK | STOCK | STOCK | STOCK | STOCK | | | | |
| 14" | | STOCK | STOCK | STOCK | STOCK | STOCK | | | | |
| 16" | | STOCK | STOCK | STOCK | STOCK | STOCK | | | | |
| 18" | | STOCK | STOCK | STOCK | STOCK | STOCK | | | | |
| 20" | | STOCK | STOCK | STOCK | STOCK | STOCK | | | | |
| 24" | | STOCK | STOCK | STOCK | STOCK | STOCK | | | | |



CLASS 2500 FLANGES - RAISED OR FLAT FACE

| Size | Slip-On | Welding-Neck | | | Blind | | Threaded | Socket-Weld | | Lap Joint |
|------------------------|----------|--------------|---------------|-----------------|----------|-----------------|----------|-------------|---------------|-----------|
| | | STD & XS | XXS & SCH-160 | Ring Type Joint | STD | Ring Type Joint | | STD & XS | XXS & SCH-160 | |
| Catalog Page Reference | | | | | | | | | | |
| 1/2" | \$ STOCK | \$ STOCK | \$ STOCK | \$ STOCK | \$ STOCK | \$ STOCK | | | | |
| 3/4" | STOCK | STOCK | STOCK | STOCK | STOCK | STOCK | | | | |
| 1" | | STOCK | STOCK | STOCK | | | | | | |
| 1 1/4" | | | | | | | | | | |
| 1 1/2" | | | | | | | | | | |
| 2" | | \$ STOCK | \$ STOCK | \$ STOCK | \$ | \$ | | | | |
| 2 1/2" | | | | | STOCK | STOCK | | | | |
| 3" | | STOCK | STOCK | STOCK | STOCK | STOCK | | | | |
| 3 1/2" | | STOCK | STOCK | STOCK | | | | | | |
| 4" | | STOCK | STOCK | STOCK | | | | | | |
| 5" | | | | | | | | | | |
| 6" | | | | | | | | | | |
| 8" | | | | | | | | | | |
| 10" | | | | | | | | | | |
| 12" | | | | | | | | | | |

NOTE: PRICE SHEET 109

ALL PRICES ARE
BASED ON ORDERS
OF APPROXIMATELY
EQUAL AMOUNTS OF
FITTINGS AND FLANGES
PAGE 8



PHONE: 708/594-1700

773/582-3500

FAX: 708/458-0106

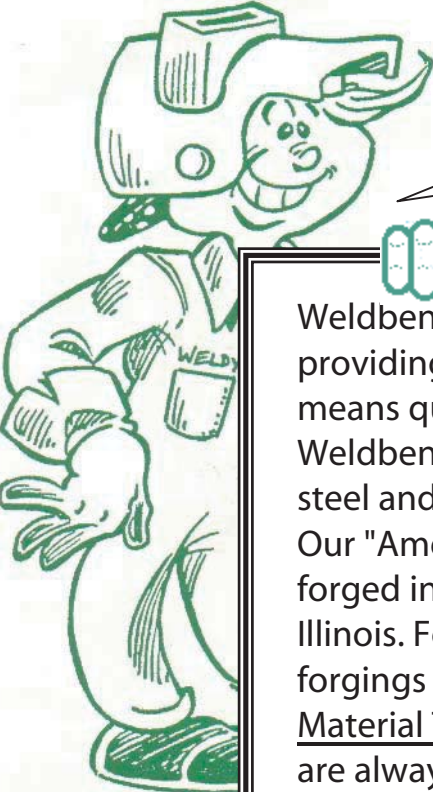
773/582-7621

www.WELDBEND.com

e-mail: info@weldbend.com

WELDBEND

"The New Standard for Welding Fittings and Flanges"



Weldy Weldbend's
pledge of quality sez:

Weldbend has long been known in the fittings and flange field for providing the best quality and the best value. The name "Weldbend" means quality.

Weldbend pledges to use the highest grade and /or best quality steel and forgings in our lines of fittings and flanges.

Our "American made" line uses only top-quality steel from U.S. mills, forged into fittings and flanges at Weldbend's own plant in Argo, Illinois. For our other lines, we search worldwide for steel and/or forgings to maintain our high quality and our rate of production. Material Test Reports, which identify the source of the steel used, are always available, at no charge. We are proud to compare our fittings and flanges with any produced in the world.

All Weldbend sales are made solely in accordance with Weldbend's standard terms and conditions of sales, which are set forth in our catalog. Weldbend provides a catalog for the convenience of its customers in ordering Weldbend products.

WELDBEND We stand for value, quality, fair and equal pricing.

WELDBEND fittings conform to ASTM A234, ASME SA234, WPB specifications and to ASME/ANSI B16.9, B16.28 specifications.

WELDBEND flanges conform to ASTM A105, ASME SA105 and to ASME/ANSI B16.5, B16.47 specifications.

Prices are subject to change without notice

ADDITIONAL CHARGES:

- * ST-2/NAFTA Forms will incur a supplemental charge of \$65.36 USD for each product and/or code
- * Original Mill Test Report will incur a supplemental charge of \$261.44 USD for each item and/or code
- * Research/Verification of Heat codes will incur a supplemental charge of \$65.36 USD for each item and/or code
- * Special shipping instructions and/or shipping methods (i.e.flatbeds) may incur additional costs.